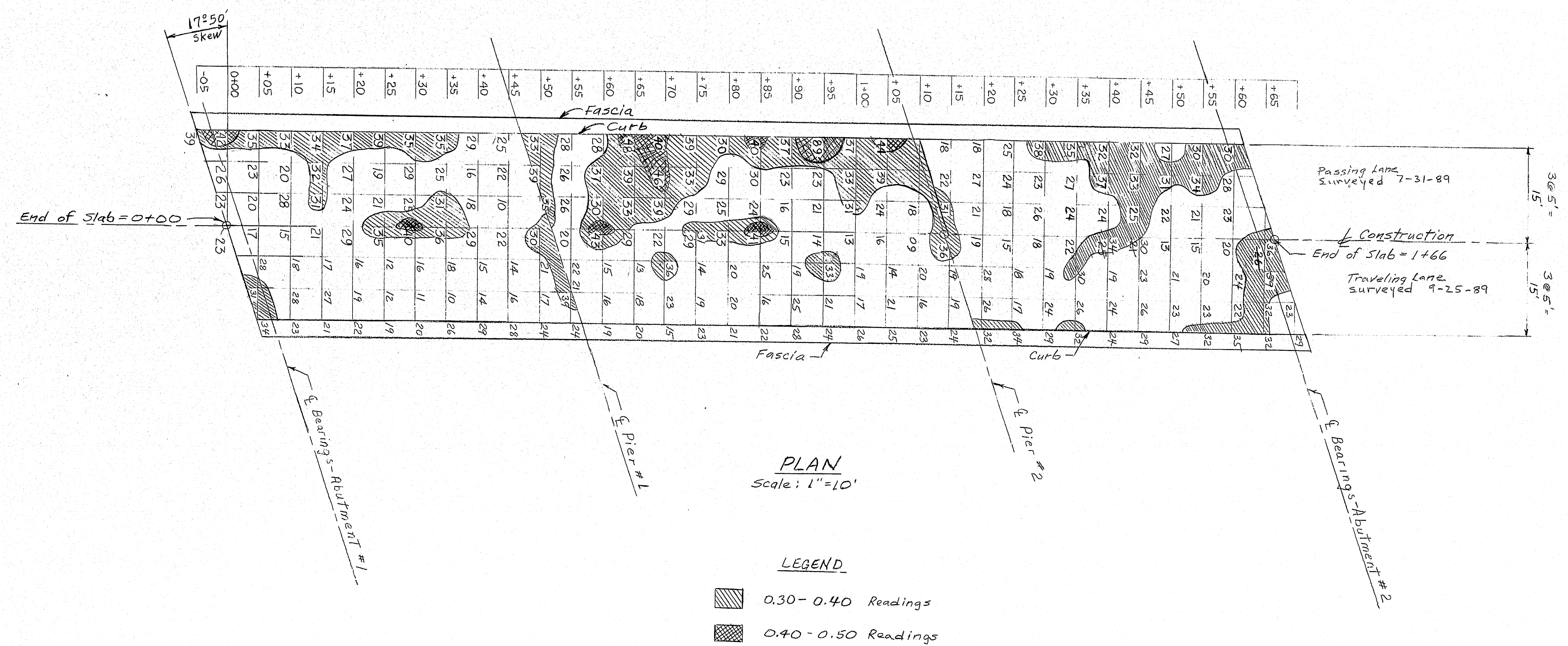


PROJECT DESIGN ENGINEER	BY	DATE
PLANS	DESIGN - DETAIL	K.H./a C.D.H. 10-87
CHECKED		
REVISIONS		
FIELD CHANGES		



119-391

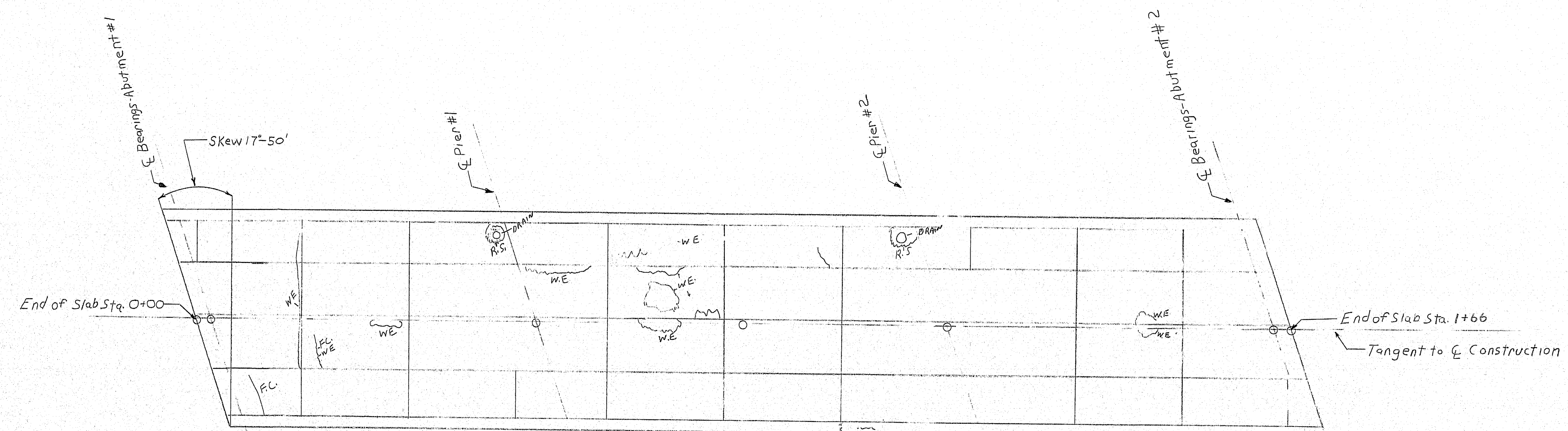
STATE OF MAINE
DEPT. OF TRANSPORTATION

INTERSTATE 95-NB
OVER
MAIN STREET
IN THE CITY OF
WATERVILLE

Voltmeter Survey

SHEET OF AUGUSTA, MAINE Sept. 1989

F.C.R.A. REQ. NO.	STATE	PROJECT NUMBER	SHEET NO.	TOTAL SHEETS
1	MAINE			



PLAN
Scale 1"=10'

Legend
FL - Fine cracks
WE - Welds
N - North

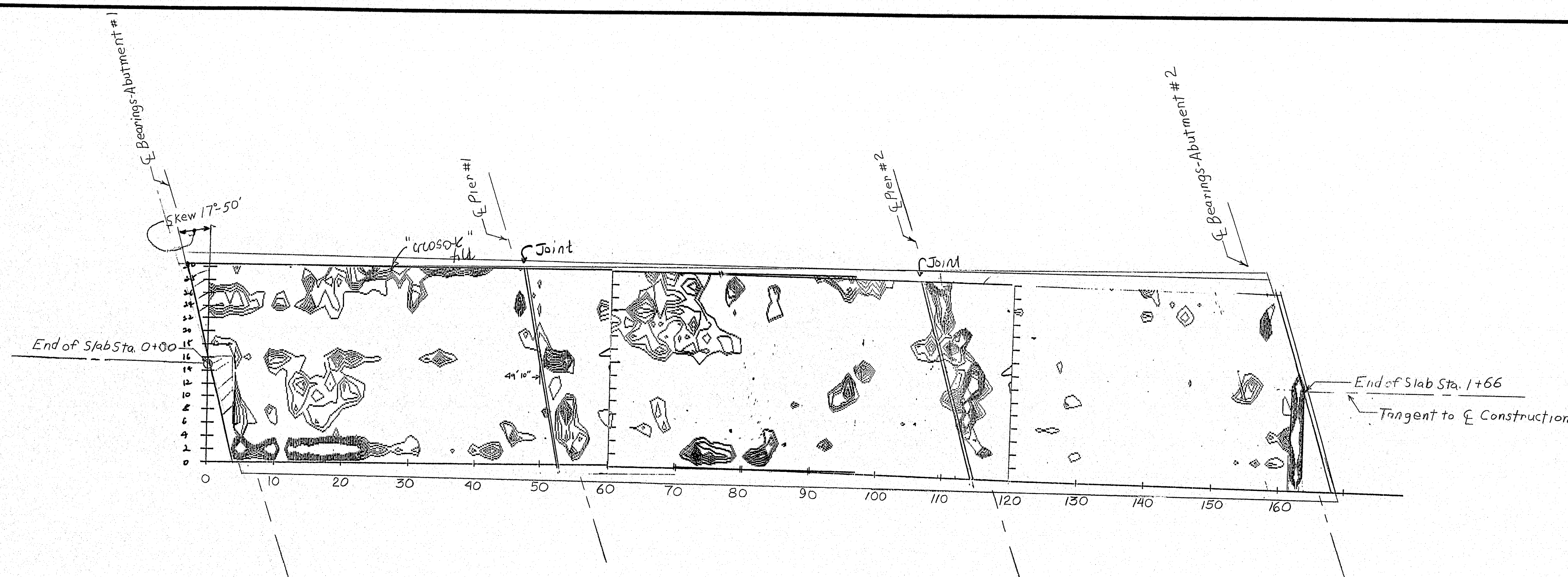
119-392

STATE OF MAINE DEPARTMENT OF TRANSPORTATION	
INTERSTATE #95 OVER MAIN STREET IN THE CITY OF WATERVILLE	
Bottom of Slab	
SHEET	OF AUGUSTA, MAINE March 1959

PROJECT DESIGN ENGINEER	BY	DATE
DESIGN - DETAILED	C.D. WILK	3-16-59
REVISIONS		
FIELD CHANGES		

BRUNING 45710-1

F.H.A. REG. NO.	STATE	PROJECT NUMBER	SHEET NO.	TOTAL SHEETS
1	MAINE			



PLAN
Scale 1"=10'

PROJECT DESIGN ENGINEER	BY	DATE
DESIGN - DETAILED		
CHECKED		
REVISIONS		
FIELD SURVEYS		

BRUNING 427104

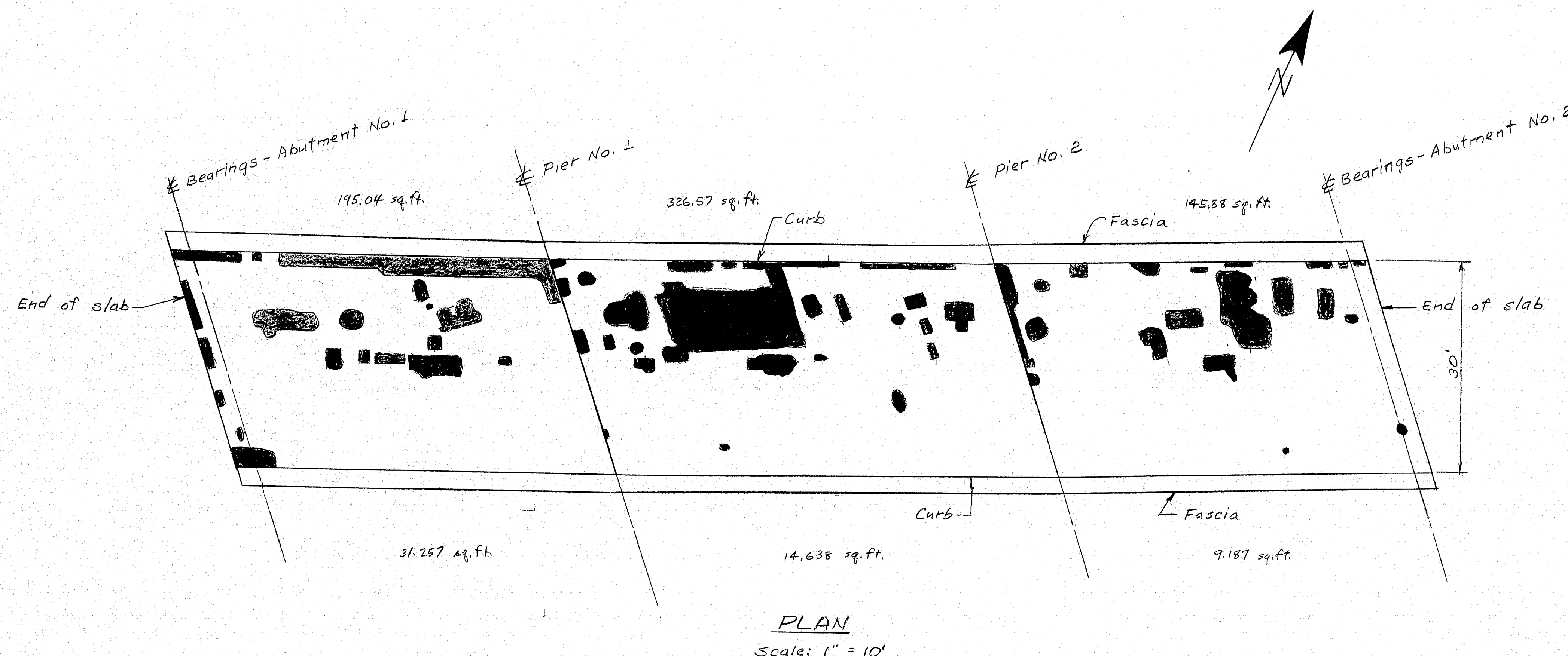
119-393

STATE OF MAINE
DEPARTMENT OF TRANSPORTATION

INTERSTATE #95
OVER
MAIN STREET
IN THE CITY OF
WATERVILLE

Radar - Naser Interpretation
SHEET OF AUGUSTA, MAINE 89

F.W.A. REG. NO.	STATE	PROJECT NUMBER	SHEET NO.	TOTAL SHEETS
1	MAINE			



All black areas of the deck were chipped 1" below resteeal.

Passing Lane: 195.04 sq. ft.
326.57
145.88
667.49 sq. ft.

Travel Lane: 31.257 sq. ft.
14.638
9.187
55.082 sq. ft.

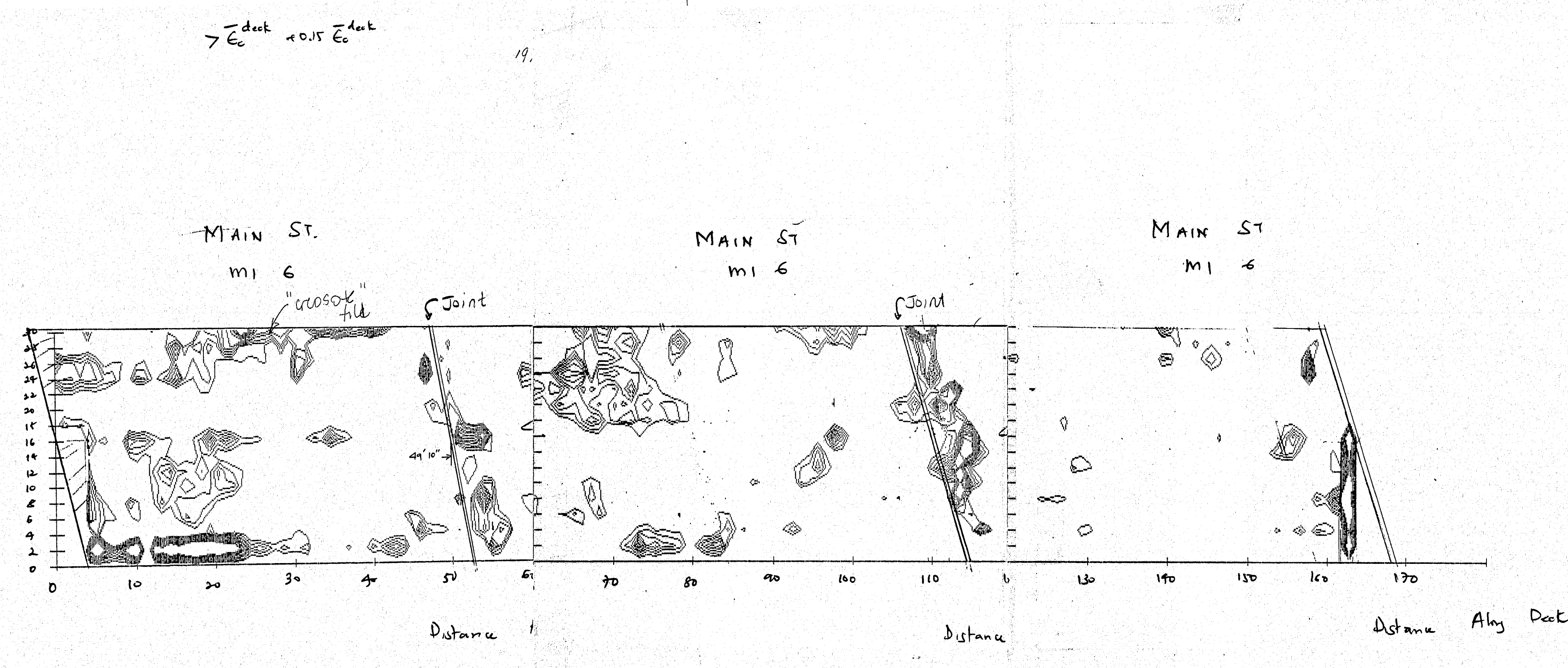
PROJECT DESIGN ENGINEER	BY	DATE
DESIGN - DETAIL	AK	7-25-89
CHECKED		
REVISIONS		
FIELD CHANGES		

BRUNING 45710-1

119-394

STATE OF MAINE DEPARTMENT OF TRANSPORTATION
INTERSTATE 95-NB OVER MAIN STREET IN THE CITY OF WATERVILLE
Material Removal SHEET OF AUGUSTA, MAINE AUGUST 1989

F.H.W.A. REG. NO.	STATE	PROJECT NUMBER	SHEET NO.	TOTAL SHEETS
1	MAINE			



PROJECT DESIGN ENGINEER	BY	DATE
DESIGN - DETAILED	K.M.	C.D.H.
CHECKED		
REVISIONS		
FIELD CHANGES		

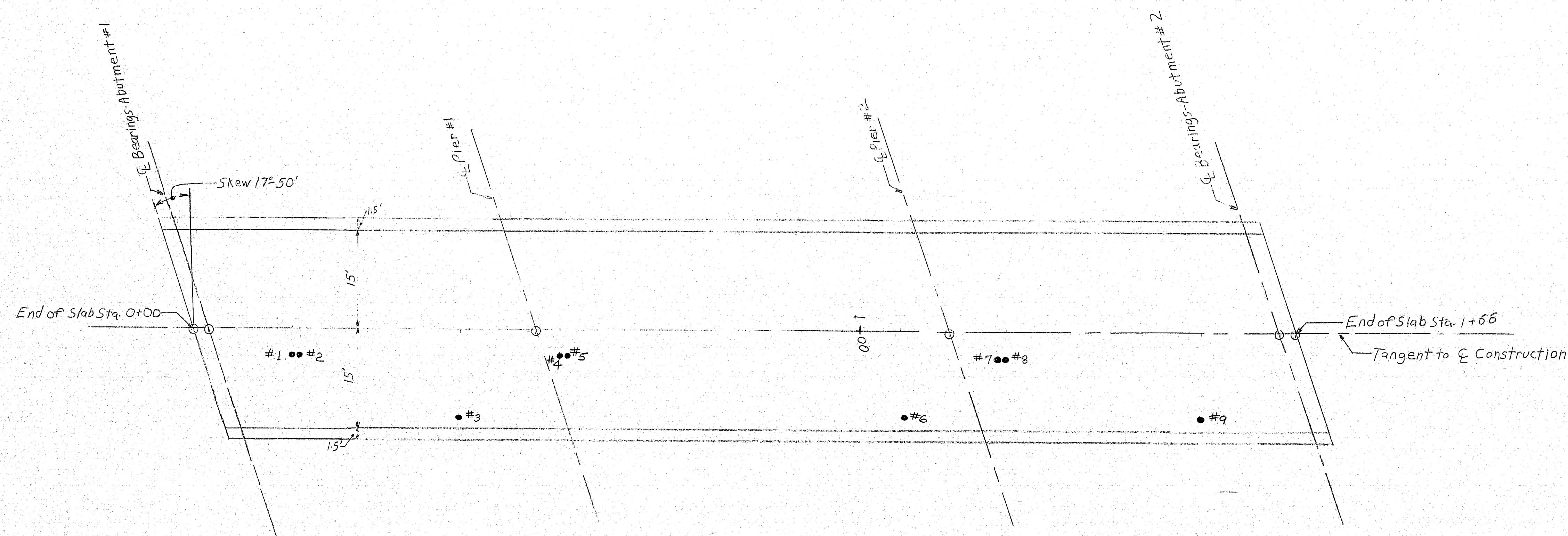
PLANS

BRUNING 457101

119-395

STATE OF MAINE DEPARTMENT OF TRANSPORTATION
INTERSTATE #95-NB OVER MAIN STREET IN THE CITY OF WATERVILLE
Radar Survey - Maser Interpr. SHEET OF AUGUSTA, MAINE JUNE 1989

F.R.W.A. REG. NO.	STATE	PROJECT NUMBER	SHEET NO.	TOTAL SHEETS
1	MAINE			



PLAN
Scale 1"=10'

Core Location			Chloride Concentrations	
Core No.	Station	Offset	Pounds Per C.Y. 0 - 1/2 Inch	1/2 - 1 1/2 Inch
1	0+15	4' R	0.59	0.52
3	0+40	13' R	1.48	1.18
4	0+55	4' R	1.59	1.74
6	1+06	13' R	1.70	1.70
7	1+21	4' R	0.48	0.37
9	1+51	13' R	1.26	1.07
Threshold Value			1.30	
			Compressive Strength	
2	0+16	4' R	4580 psi	
5	0+56	4' R	4600 psi	
8	1+22	4' R	3950 psi	

Legend
#1 Repetitive Core # Location

119-396

STATE OF MAINE
DEPARTMENT OF TRANSPORTATION

INTERSTATE #95-NB
OVER
MAIN STREET
IN THE CITY OF
WATERVILLE

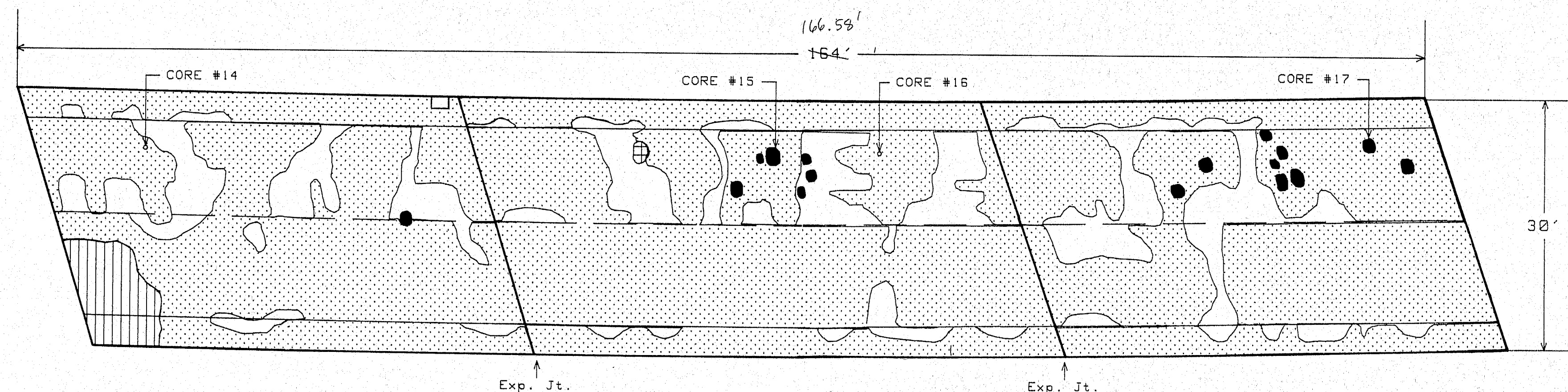
Chloride Map

SHEET OF AUGUSTA, MAINE March 1994

PROJECT DESIGN ENGINEER	BY	DATE
DESIGN - DETAILED	COH	7/5/94
CHECKED		
REVISIONS		
FIELD CHANGES		

BRIDGE 45704

8 | 7 | 6 | 5 | 4 | 3 | 2 | 1

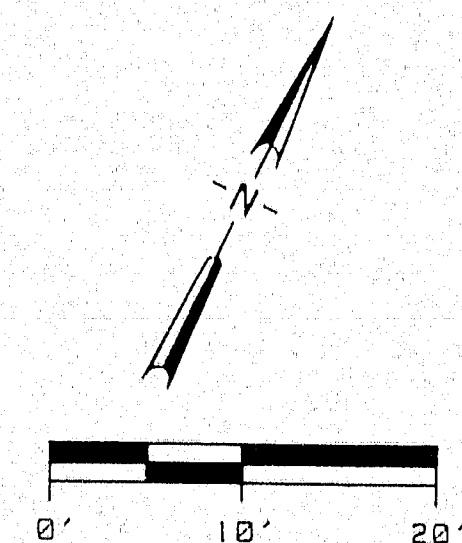


How can have voltheter
 Rebuilding at a patch/
 chipped out area?
 ex. Sta 1+58, off 10' Lt
 & Sta 1+45, off 15' Lt
 & " " " 10' Lt
 & " " " 5' Lt
 & Sta 1+35, off 10' Lt

AREAS	NORTHBOUND LANES (sq. ft.)
Total Area	4,920
Area In Shade	183
Area Inspected	4,817
Delamination	26 (0.5%)
Debond	4,820 (83.5%)
Asphalt Patch	4 (0.1%)
Concrete Patch	None
Inspection Date:	June 28, 1989

Surface Material: Asphaltic Concrete Overlay

- LEGEND**
- Delamination
 - Debond
 - ⊕ Asphalt Patch
 - ⊕ Concrete Patch
 - ◐ Area In Shade



Donohue

INFRARED THERMOGRAPHIC INVESTIGATION OF
 INTERSTATE 95 NORTHBOUND OVER MAIN STREET
 WATERVILLE, MAINE
 MAINE DEPARTMENT OF TRANSPORTATION

Engineers & Architects
 COMPUTER AIDED DESIGN/DRAFTING

Sheet No.	3 of 6
File No.	
Project No.	16997
Drawing No.	3

119-397